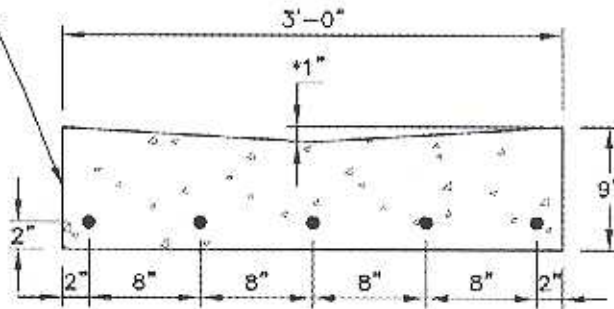


CONCRETE SHALL BE  
SHA MIX NO. 3  
REINFORCED WITH NO. 6  
DEFORMED REINFORCING  
BAR AS SHOWN



NOTE:

1. DO NOT UTILIZE AT HANDICAP RAMP UNLESS SURFACE SLOPE  $\leq$  20:1 (5%)
- \* 2. RISE AT H/C RAMPS SHALL BE  $\frac{3}{8}$ "

APPROVAL

*M. J. Jundel* 2/25/09  
TOWN ENGINEER DATE

REVISED

OCT 1, 88

AUG 1, 94

MAR 1, 98

FEB 1, 06

FEB 25, 09

TOWN OF EASTON  
AND

EASTON UTILITIES  
STANDARD DETAILS

VALLEY GUTTER AND  
INTERSECTION DETAIL

ISSUED: MAY 1, 1986

STANDARD NO. PW-2.02